



# Client and RTD Installation Instructions

This guide will show you how to install:

1. The RIT Client
2. The RTD Links

## 1. RIT Client

The client software should be installed on all workstations accessing the instructor’s workstation (or the server running the market).

**Please follow the steps described below to install the RIT Client**

### Step 1

Go to <http://rit.rotman.utoronto.ca/software.asp>

In the “Download Links” section, click on “Download Link 1”

<b>Rotman Interactive Trader Client</b>		
Version 2.00		
Build 1.1.1/5		
<a href="#">Download 1 (RIT Client)</a>	Date Updated:	Aug 1, 2012
<a href="#">Download 2-a (Excel 32-bit RTD Links)</a>	Date Updated:	Aug 1, 2012
<a href="#">Download 2-b (Excel 64-bit RTD Links)</a>	Date Updated:	Feb 6, 2013

### Step 2

In the new page that has been opened, click on “Download RIT 2.0 Client”

**Rotman School of Management**  
**RIT 2.0 Client**

**Name:** RIT 2.0 Client

**Version:** 1.1.8

**Publisher:** Rotman

[Download RIT 2.0 Client](#)

### Step 3

Once you click on the “Download RIT 2.0 Client” button, you will notice that “click.application” file is downloaded. Depending on the web browser, it may ask you whether you want to keep downloading the file. If this is the case, click on “Keep” in order to successfully download the file. Once the file is downloaded, simply click on the file to proceed with installation.

Notes for instructors, the server and client can be installed on the same computer.

## **2. RTD Links**

In addition to the RIT Client, the computer needs an MSI file installed (The RTD/API Data Link). This doesn't automatically update, but it really won't be changed frequently if ever. This registers some DLLs and allows for communication between RIT and Excel. You can download the RTD/API Data Link at the following link <http://rit.rotman.utoronto.ca/software.asp>.

Please note that there are 2 files, 32bit and 64bit, you need to install the file according to your Excel version. If you don't know which version of Office you are using, please follow the instructions below:

In Office 2013

1. Open Excel.
2. Click **File > Account**.
3. Click on **About Excel**.



In Office 2010

1. Open Excel.
2. Click **File > Help**.
3. Under **About Microsoft Excel** the version is listed with the platform, similar to this:  
*Version: 14.0.0000.0000 (32-bit)*

Please note that you can have a 32bit Office version even if your OS is 64bit and viceversa.

## Please follow the steps described below to install the RTD Links

### Step 1

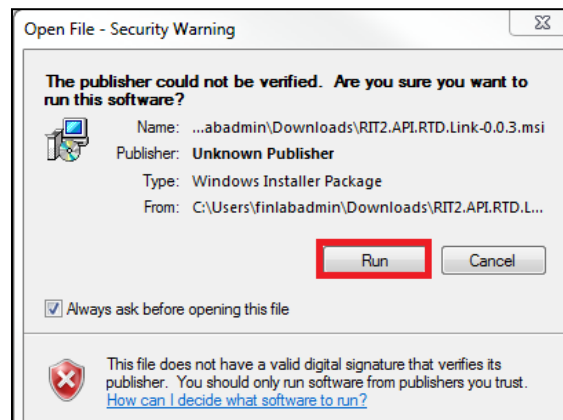
Go to <http://rit.rotman.utoronto.ca/software.asp>

In the “Download Links” section, click on “Download Link 2-a” if you have Excel 32bit installed on your PC or “Download Link 2-b” if you have Excel 64bit

Rotman Interactive Trader Client		
Version 2.00		
Build 1.1.1/5		
<a href="#">Download 1 (RIT Client)</a>	Date Updated:	Aug 1, 2012
<a href="#">Download 2-a (Excel 32-bit RTD Links)</a>	Date Updated:	Aug 1, 2012
<a href="#">Download 2-b (Excel 64-bit RTD Links)</a>	Date Updated:	Feb 6, 2013

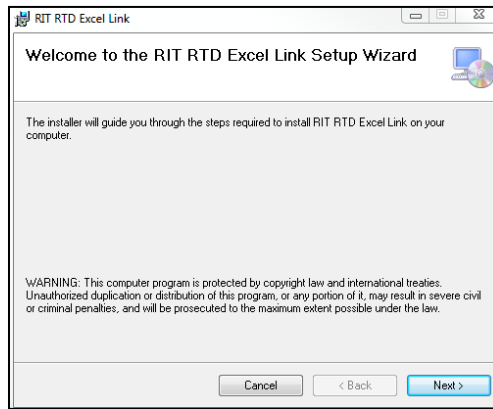
### Step 2

Once you click on the link described in Step 1, you will download a file called “RIT2.API.RTD.Link”. Double click on it and then select “Run”



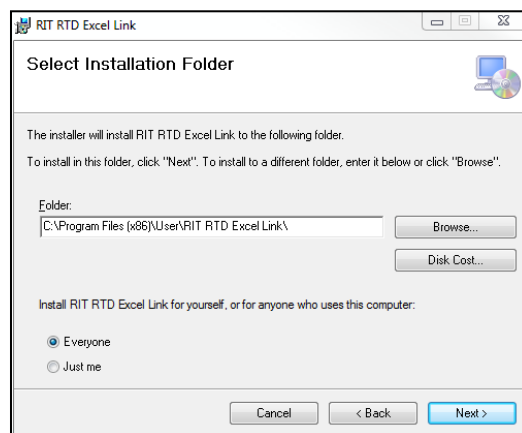
### Step 3

On the following window, click on “Next”



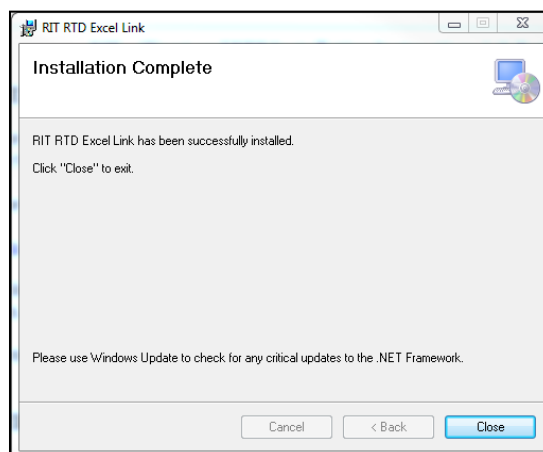
#### Step 4

Choose the folder where to install the RTD Links and then start the installation



#### Step 5

Once the installation is complete, you will see the following window.



You are now ready to use the Rotman Interactive Trader and link real-time data in Excel!